

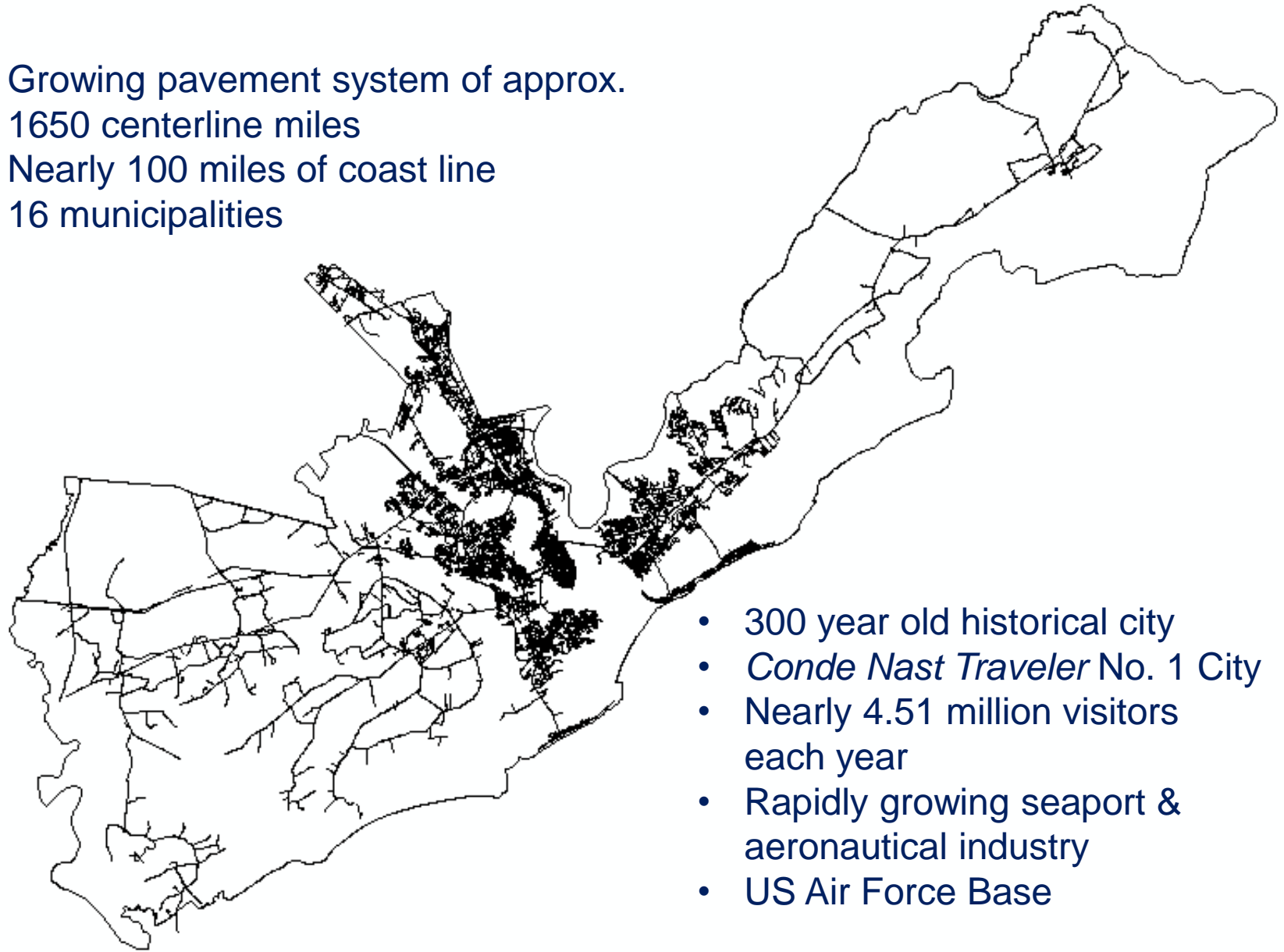


Charleston County, South Carolina

Richard Turner
Pavement Manager



- Growing pavement system of approx. 1650 centerline miles
- Nearly 100 miles of coast line
- 16 municipalities



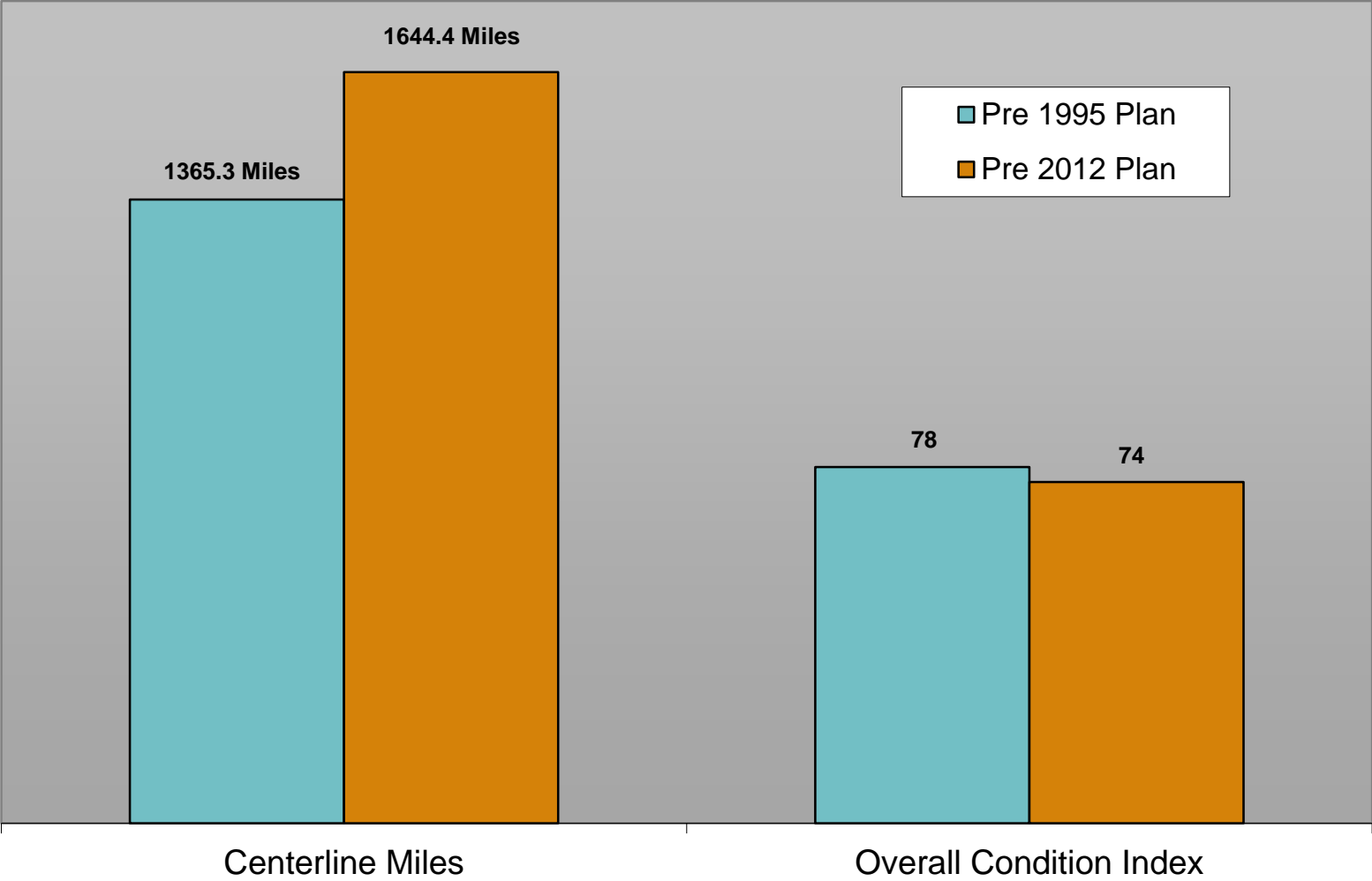
- 300 year old historical city
- *Conde Nast Traveler* No. 1 City
- Nearly 4.51 million visitors each year
- Rapidly growing seaport & aeronautical industry
- US Air Force Base

Pavement Management System – History

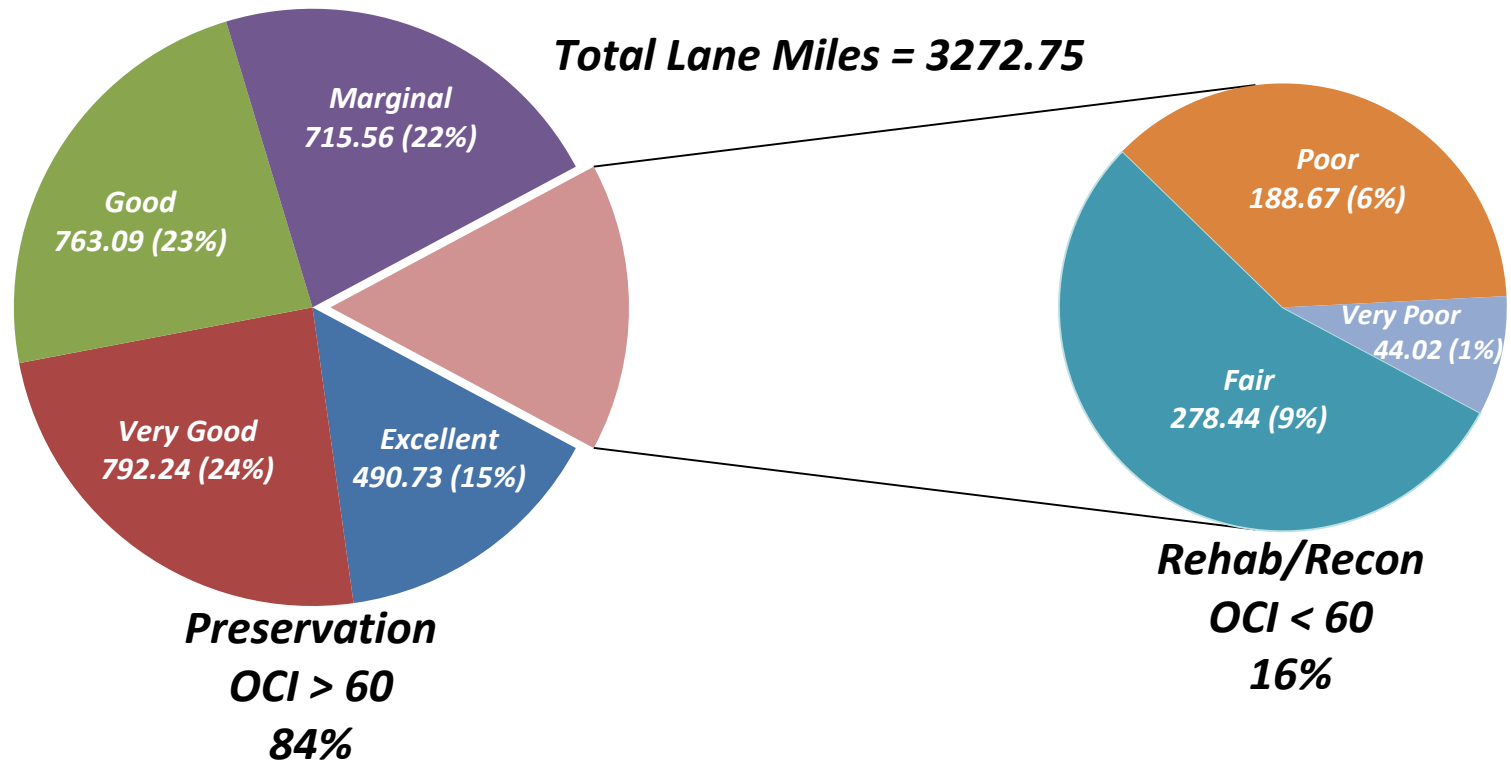
- Pavement Management System implemented in early 1990's with note cards.
- Dos-based Computer System utilized from 1995 to 2005
- The CarteGraph program was put into place in 2005 and is utilized today.
- The County hired a consultant in 2009 to inspect all roads within the County and provide guidance into the use of CarteGraph.
- 1650 centerline miles - including all State Secondary Roads and Local Paved Roads



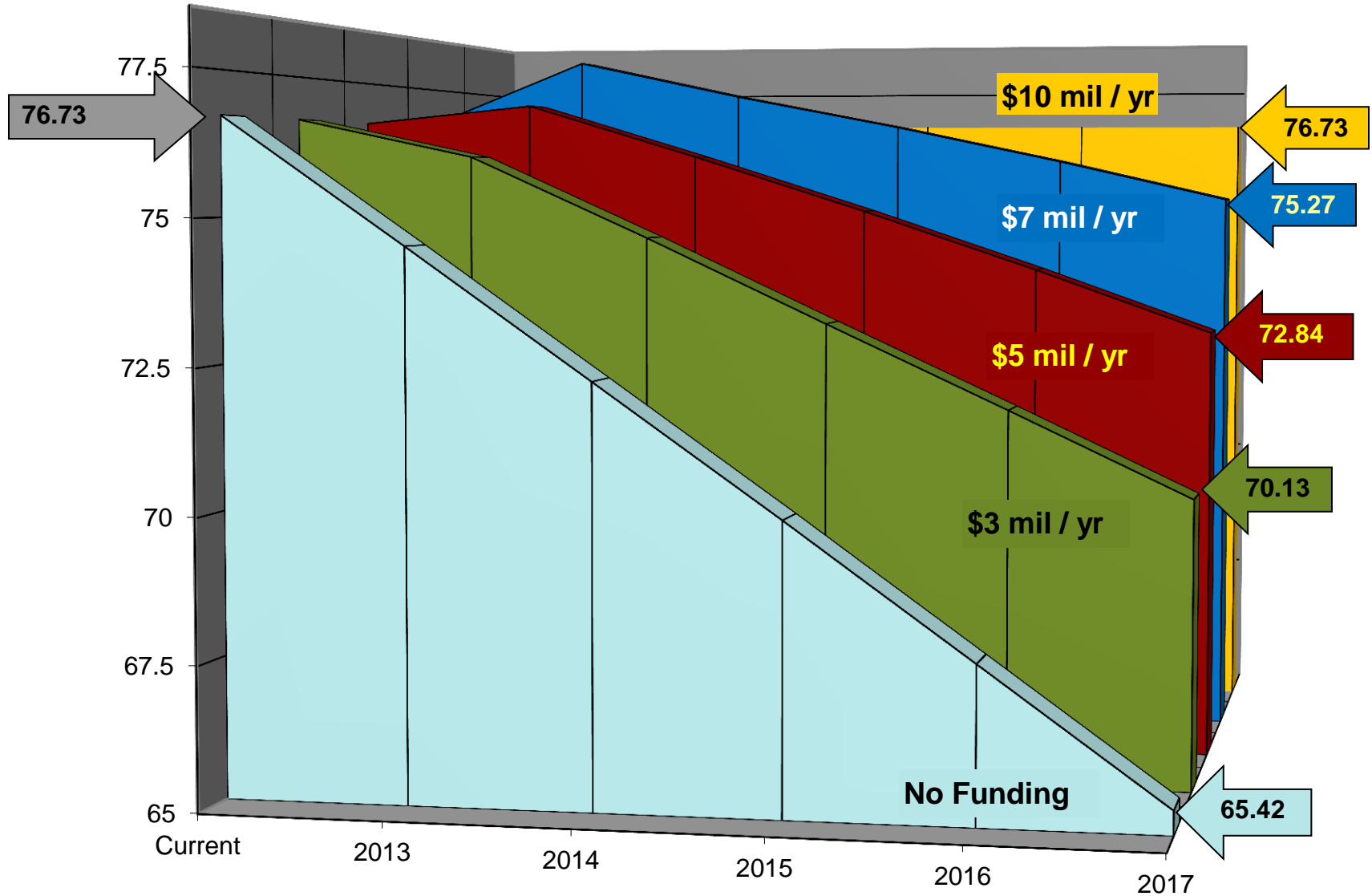
STATUS OF NETWORK



Breakdown of Roads by Overall Condition Index (OCI)



Pavement Condition Forecast



Program Strengths & Accomplishments



- History
- Funding Sources
- Support from County Council & 16 municipalities
- Website devoted to Pavement Management
- Strong partnership with SCDOT
- In-house management & inspection staff
- Completed several successful demonstration projects

Asphalt Rejuvenation Project

- Partnered with SCDOT & Pavement Technology Inc. to complete 5 test sections in 2012.
- Performed pre & post application testing
- DSR Tests showed a 45% reduction in viscosity.
- Currently working to complete the application of Reclamite on approximately 275,000 SY and 98 roads in Charleston County.
- Plan to test 10% of roads for viscosity and on two roads we will be running a Rostler analysis.



Fog Seal

- Partnered with Wright Asphalt Products Inc. & Truluck Construction Company to complete a demo project.
- Sealed the road with TRMSS (Tire Rubber Modified Surface Sealer)
- The road is approximately 1800' in length and was constructed in 2005.
- Project provided a great learning experience for our staff and the contractor.

Microsurfacing

- Completed first preservation treatment project with Slurry Pavers Inc. in 2011 which included approximately 200,000 SY.
- Currently partnered with SCDOT on a Fed Aid Match Program to place 412,000 SY of Microsurfacing on 9 roads in Charleston County.





Program Challenges

- *History of worst first resurfacing*
- *Just starting the use of preservation treatments*
- *Limited funds*
- *Unique assortment of roads*
- *Minimal amount of preservation contractors*
- *Limited natural resources*

Unique Assortment of Roads

- 18 different jurisdictions
- Roads range from a granite curb & cobble stone ally to a 7 lane arterial road



Opportunities for Advancement



- *Weekly TV show*
- *Door to door flyers*
- *Reverse 911 system*
- *Publish articles to showcase Pavement Preservation in Charleston County*
- *Complete more demonstration projects*
- *Partner with SCDOT on match programs*
- *Fully integrate preservation treatments into our decision matrix*

Program Threats

- Politics of dealing with 17 sets of Council members & state government
- In a 300 year old city, new things are not always well received
- Growing system vs. stagnant funding source
- Unsuccessful projects
- Bad customer service



Questions?

You can contact me at:

202-6155

or

rturner@charlestoncounty.org

Or visit our website at:

<http://www.charlestonctc.org/pavementmanagement.htm>